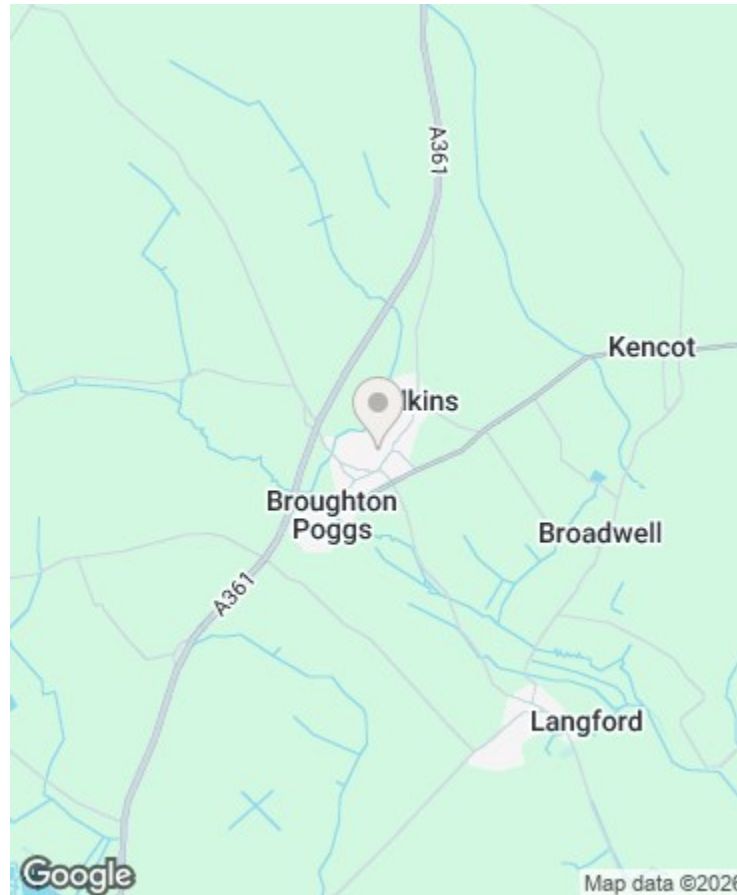




THE COTSWOLD LETTING AGENCY

BETTER BY FAR



Directions

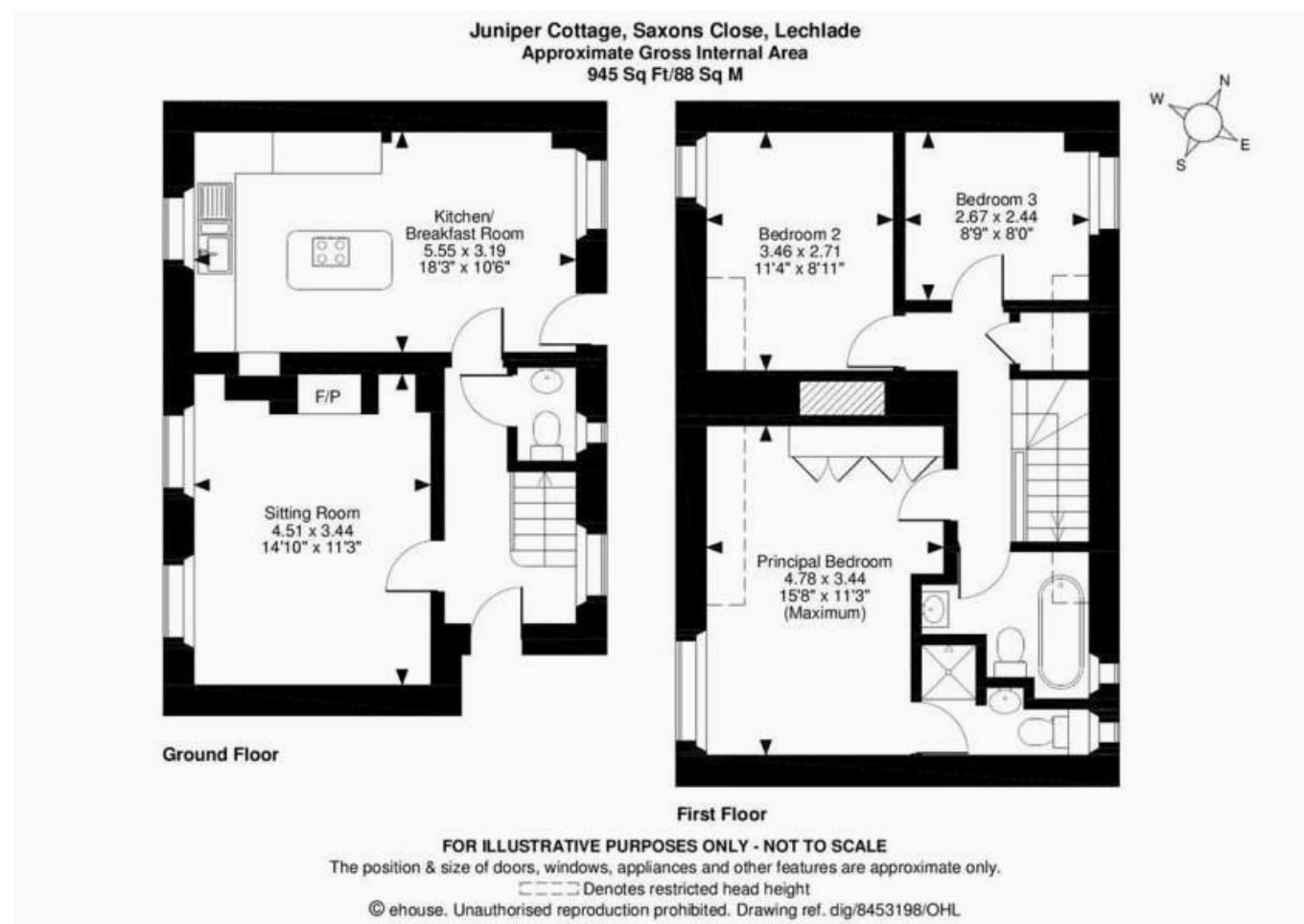
Viewings

Viewings by arrangement only. Call 01993 684572 to make an appointment.

EPC Rating

D

Energy Efficiency Rating		
	Current	Potential
Very energy efficient - lower running costs		
(92 plus) A		
(81-91) B		87
(69-80) C		
(55-68) D	60	
(39-54) E		
(21-38) F		
(1-20) G		
Not energy efficient - higher running costs		
England & Wales		
EU Directive 2002/91/EC		



Juniper Cottage, 2 Saxons Close, Filkins, GL7 3JD

£2,195

- Period cottage
- Village location
- Great walks and riding nearby
- 3 bedrooms
- Log burner
- Popular village pub

2 Saxons Close, Filkins GL7 3JD

Filkins is a charming village nestled in the heart of Gloucestershire, offering a peaceful retreat surrounded by picturesque countryside. The nearby towns of Lechlade and Burford provide a range of amenities, including shops, restaurants, and historic attractions. For a taste of traditional English pub culture, the Five Alls in Filkins offers a warm welcome and a selection of local ales and hearty food.

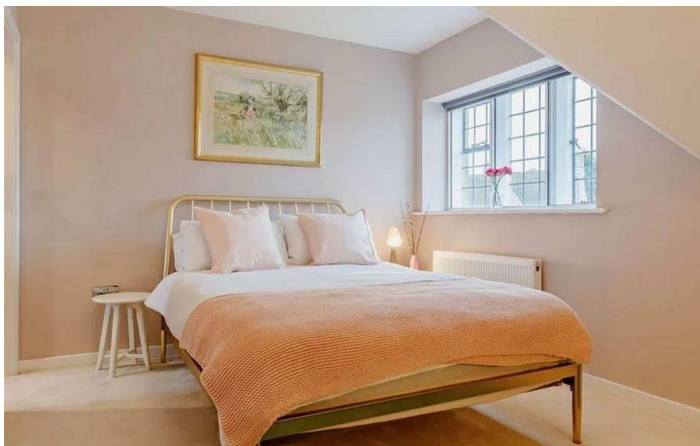
 3

 2

 1

 D

Council Tax Band: C



Nestled in a picturesque Cotswold village, this Grade II listed three-bedroom period cottage offers a delightful blend of character and modern comfort. The cottage forms part of a charming run of four cottages, and boasts a private driveway and front and rear gardens.

Downstairs is a wonderful light and airy kitchen dining room with central island, as well as a bright sitting room with log burner. Upstairs offers 3 good sized bedrooms, one is en-suite along with a family bathroom.

Enjoy the convenience of nearby amenities, including a local shop and a refreshing public open-air swimming pool. For outdoor enthusiasts, the surrounding countryside provides endless opportunities for walking, riding, and exploring. Aircraft from a nearby RAF base can occasionally be heard overhead.

With excellent road and rail connections, this charming cottage is perfect as a main residence or a peaceful weekend retreat. Don't miss the chance to experience the idyllic Cotswold lifestyle!

Contact agency for details about bills.